



KRAKEN

 KRAKENKNIFE.COM



FOUNDED IN 2000 TO PROVIDE OEM MANUFACTURING SERVICES TO SOME OF THE TOP BRAND IN THE KNIFE INDUSTRY. KRAKEN KNIFE HAS GROWN INTO MANUFACTURERS OF QUALITY KNIVES AND RELEASED OUR OWN BRAND "KRAKEN".

B01/RAEF



MODEL: B01

STEEL: M390,SATIN

HANDLE: TA5 TITANIUM

BLADE: 3.23 IN. (8.2 CM) / 0.138 IN.(0.35 CM)

CLOSED: 4.72 IN. (12 CM)

OVERALL: 7.95 IN. (20.2 CM)

WEIGHT: 2.82 OZ. (80 G)

OPENING: MANUAL OPENING, FLIPPER

LOCK: TITANIUM FRAME LOCK

POCKETCLIP: SINGLE-POSITION



B02/FARN



MODEL: B02

STEEL: 14C28N, STONE WASH

HANDLE: TA5 TITANIUM

BLADE: 2.95 IN. (7.5 CM) / 0.12 IN. (0.3 CM)

CLOSED: 3.94 IN. (10 CM)

OVERALL: 6.89 IN. (17.5 CM)

WEIGHT: 2.36 OZ. (67 G)

OPENING: MANUAL OPENING, FLIPPER

LOCK: BUTTON LOCK

POCKETCLIP: SINGLE-POSITION



B03/BRAGI



MODEL: B03

STEEL: D2, BEAD-BLASTED FINISH

HANDLE: CARBON FIBER

BLADE: 3.15 IN. (8 CM) / 0.157 IN.(0.4 CM)

CLOSED: 4.29 IN. (10.9 CM)

OVERALL: 7.36 IN. (18.7 CM)

WEIGHT: 3.07 OZ. (87 G)

OPENING: MANUAL OPENING, FLIPPER

LOCK: AXIS LOCK

POCKETCLIP: REVERSIBLE DEEP-CARRY (RIGHT/LEFT)



B04/GRANI



PARAMETER

MODEL: B04

STEEL: D2, STONEWASHED & SATIN

HANDLE: G10

BLADE: 3.07 IN. (7.8 CM) / 0.118 IN. (0.3 CM)

CLOSED: 4.29 IN. (10.9 CM)

OVERALL: 7.36 IN. (18.7 CM)

WEIGHT: 3.14 OZ. (89 G)

OPENING: MANUAL OPENING, FLIPPER

LOCK: LINNER LOCK

POCKETCLIP: REVERSIBLE DEEP-CARRY (RIGHT/LEFT)



B05/HERMOD



MODEL: B05

STEEL: M390, BEAD-BLASTED FINISH

HANDLE: TA5 TITANIUM & CARBON FIBER

BLADE: 3.15 IN. (8 CM) / 0.157 IN. (0.4 CM)

CLOSED: 4.53 IN. (11.5 CM)

OVERALL: 7.68 IN. (19.5 CM)

WEIGHT: 4.09 OZ. (116 G)

OPENING: MANUAL OPENING, FLIPPER

LOCK: BUTTON LOCK

POCKETCLIP: SINGLE-POSITION



B06/SIGURD



MODEL: B06

STEEL: 14C28N, BEAD-BLASTED FINISH

HANDLE: TA5 TITANIUM & CARBON FIBER INLAY

BLADE: 3.23 IN. (8.2 CM) / 0.157 IN. (0.4 CM)

CLOSED: 3.98 IN. (10.1 CM)

OVERALL: 7.20 IN. (18.3 CM)

WEIGHT: 3.10 OZ. (88 G)

OPENING: MANUAL OPENING, FLIPPER

LOCK: TITANIUM FRAME LOCK

POCKETCLIP: REVERSIBLE DEEP-CARRY (RIGHT/LEFT)



B07/ALBIR



MODEL: B07

STEEL: M390, BEAD-BLASTED FINISH

HANDLE: TA5 TITANIUM & CARBON FIBER INLAY

BLADE: 3.35 IN. (8.5 CM) / 0.157 IN. (0.4 CM)

CLOSED: 4.92 IN. (12.5 CM)

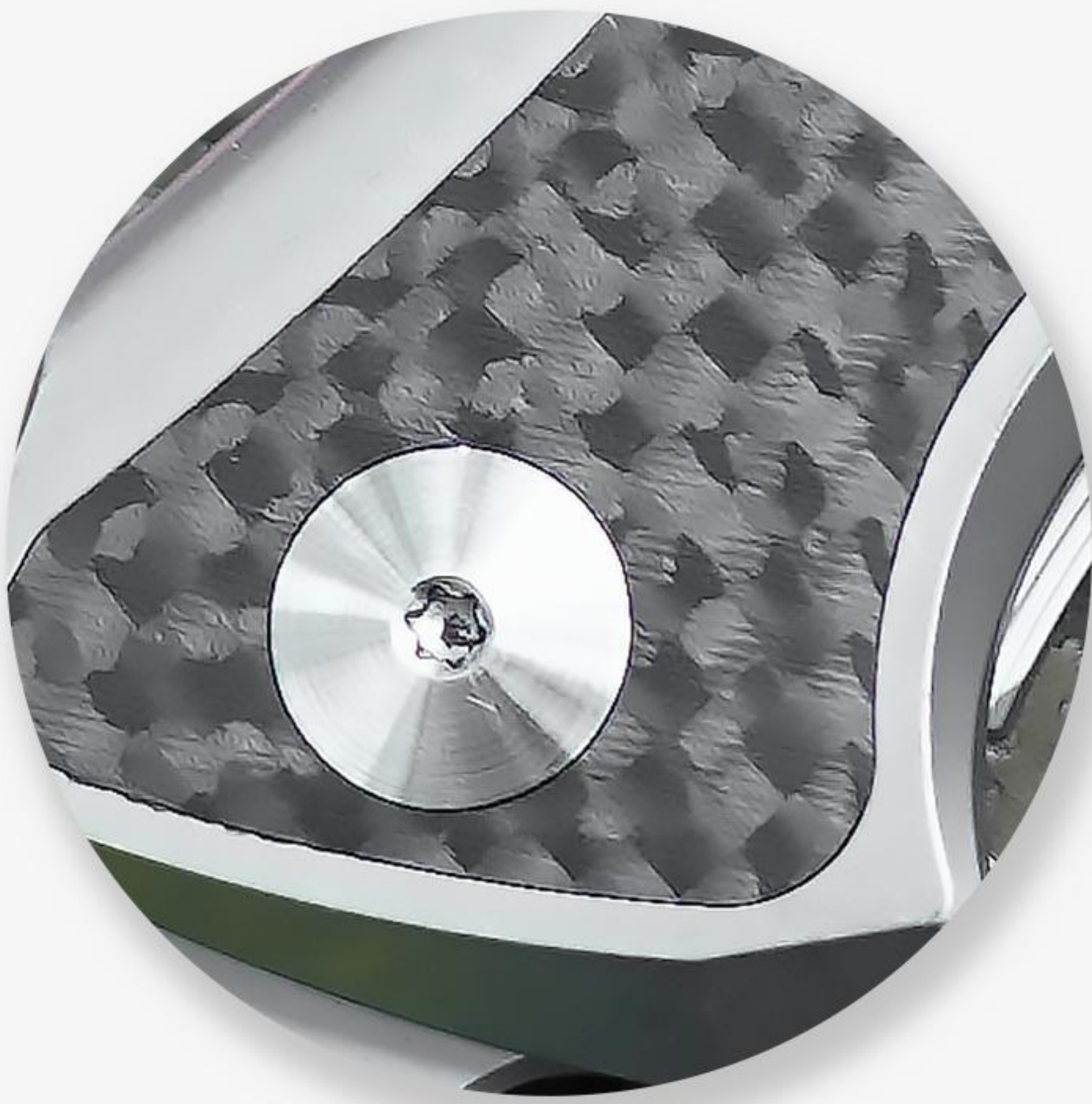
OVERALL: 8.27 IN. (21 CM)

WEIGHT: 4.97 OZ. (141 G)

OPENING: MANUAL OPENING, FLIPPER

LOCK: TITANIUM FRAME LOCK

POCKETCLIP: SINGLE-POSITION



B08/RAGNA



MODEL: B08

STEEL: M390, TITANIUM CARBONITRIDE COATING

HANDLE: TA5 TITANIUM&CARBON FIBER INLAY

BLADE: 2.79 IN. (7.1 CM) / 0.157 IN.(0.4 CM)

CLOSED: 3.82 IN. (9.7 CM)

OVERALL: 6.5 IN. (16.5 CM)

WEIGHT: 3.2 OZ. (91 G)

OPENING: MANUAL OPENING, FLIPPER

LOCK: TITANIUM FRAME LOCK

POCKETCLIP: REVERSIBLE DEEP-CARRY (RIGHT/LEFT)



B09/SKALDR



KRAKEN

 KRAKENKNIFE.COM

MODEL: B09

STEEL: M390, BEAD-BLASTED FINISH

HANDLE: TA5 TITANIUM

BLADE: 3.43 IN. (8.7 CM) / 0.157 IN. (0.4 CM)

CLOSED: 4.84 IN. (12.3 CM)

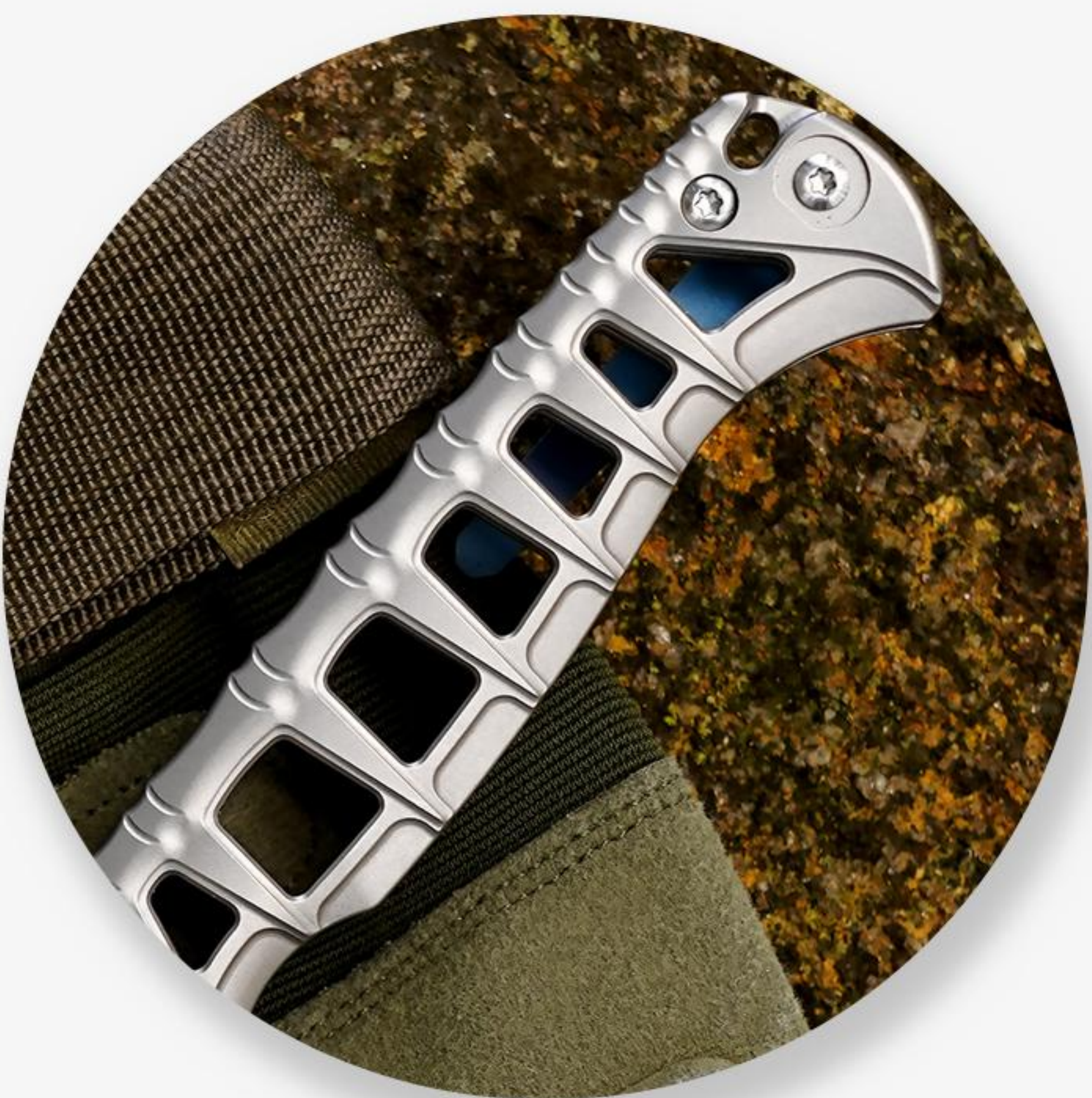
OVERALL: 8.27 IN. (21 CM)

WEIGHT: 5.26 OZ. (149 G)

OPENING: MANUAL OPENING, FLIPPER

LOCK: BUTTON LOCK

POCKETCLIP: REVERSIBLE DEEP-CARRY (RIGHT/LEFT)





TO BE CONTINUED

BE WITH US...

A4 Yinling Science & Technology Industrial Park,
Jiangcheng District, Yangjiang City,
GD PR, China 529500

www.krakenknife.com